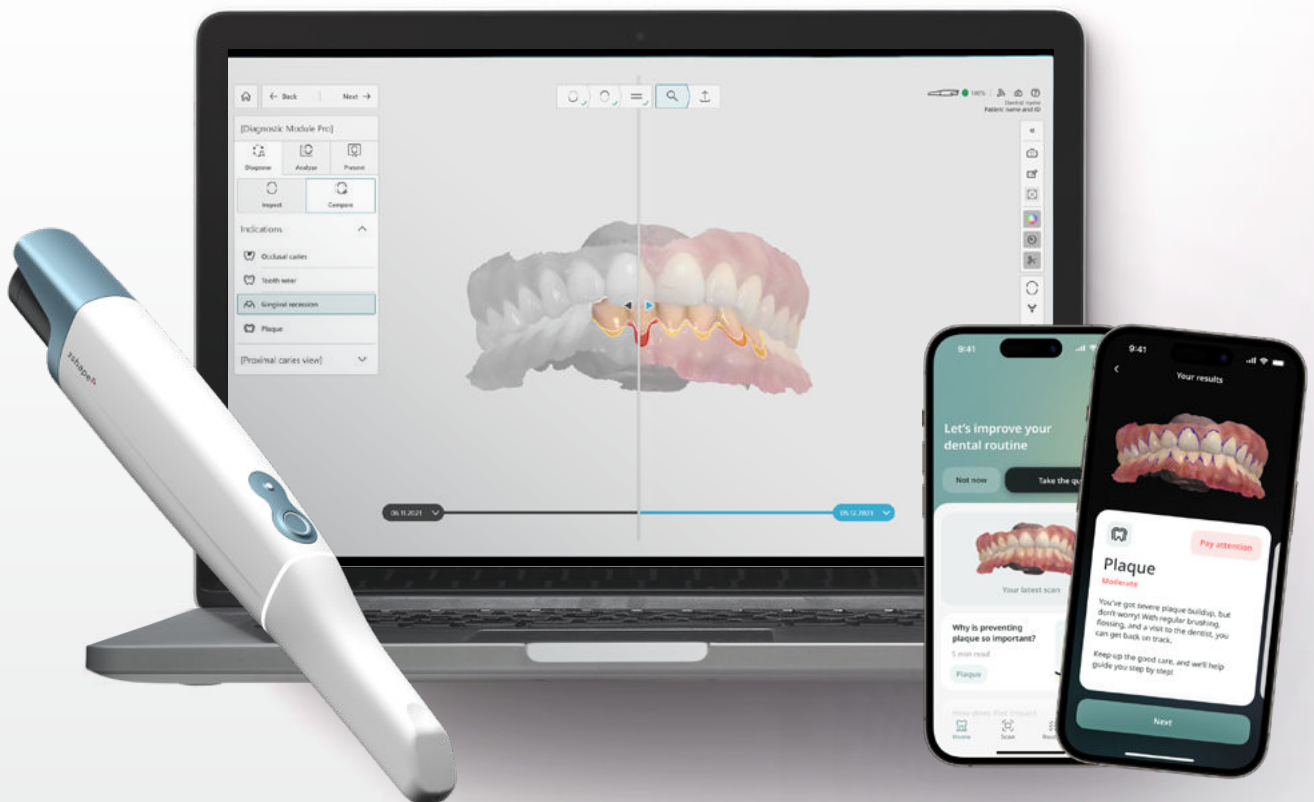


TRIOS 6, TRIOS Dx and DentalHealth App

Version 1.0
March 2025

Frequently Asked Questions

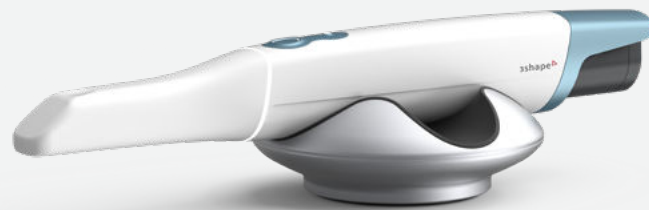


Let's change dentistry together

3shape 

Introduction to 3Shape TRIOS 6

(Please note that the availability of TRIOS 6 and accessories is subject to regional availability)



What is 3Shape TRIOS 6?

Introducing TRIOS 6, Dx Plus and MyDental app – an outstanding revolution of hardware and software to redefine your patient's experience.

TRIOS 6 delivers patients with our best-ever scan quality with up to 110% higher resolution compared to existing TRIOS portfolio with unmatched geometry and color detail. Exclusively compatible with TRIOS 6 scans, TRIOS Dx Plus is the latest 3Shape innovation, delivering cutting-edge, AI-assisted software that helps objectively detect key oral health conditions.

Together with our groundbreaking DentalHealth App, communicate tailored, on-demand education and insights, empowering patients to co-own their dental health.

Scanner related questions:

What are the weight and dimensions of TRIOS 6?

The TRIOS 6, including battery, weighs 308 grams and its dimensions are 3.8 x 3.9 x 26.6 cm.

Are TRIOS 6 scans accepted for Invisalign?

No, TRIOS 6 does not integrate with Invisalign. TRIOS 3 is currently the only TRIOS scanner that can send scans for Invisalign.

Can TRIOS 6 only scan for diagnostic workflows?

No, just like with any other TRIOS, you can scan for all available workflows in 3Shape Unite. You can find your preferred lab or partner in 3Shape Unite Store and connect in one click. There are over 25.000 3Shape labs, 40+ PMS systems and 100+ world-class partners for clear aligners, 3D printing and milling, design services and more, to work with.

What is the difference between TRIOS 5 and TRIOS 6?

TRIOS 6 is the first scanner whose scans can be utilized in AI diagnostic workflows. Moreover, it offers HD scanning, giving a higher quality scan for dentists and labs. Moreover, with TRIOS 6 you can scan with three imaging modalities at the same time which enable you to look into dentin and between the teeth that can be used in TRIOS Dx Plus to visualize and help detect proximal caries. TRIOS 6 has a new and improved industrial design to visually and tactilely distinguish between the scan button and the remote button. TRIOS 6 embodies all the great features from TRIOS 5, being ergonomic, effortless and hygienic.

Will ScanAssist be implemented for TRIOS 6?

Yes, ScanAssist will be available for TRIOS 6.

Does ScanAssist work for edentulous and implants as well?

Yes, ScanAssist will assist dentists while scanning through all workflows.

Will TRIOS 6 need calibration?

TRIOS 6 is a calibration free scanner, so there will be no need for TRIOS 6 to be calibrated.

What are the benefits of HD scanning?

With HD (high definition) scanning you can capture a higher resolution, which results in more detailed scans and realistic images, making it easier to e.g. indicate preparation margins when doing status scans as well as detecting any irregularities on teeth or gingiva, leading to excellent outcomes for your patients within intended use.

How can I use the scan button?

The dual button consists of a scan button that activates scanning, and a remote button for in-software navigation, allowing you to analyze the scan and complete a full workflow without touching the PC or Move. With TRIOS 6, there is an update to the design to emphasize the distinction, where the scan button is slightly larger, and the remote button features a small, raised bump for a different tactile feel, such that it feels different than the scan button.

Can I use TRIOS on a Mac computer?

No, TRIOS scanners and other 3Shape products operate on a Windows system.

Which configurations are available with TRIOS 6?

TRIOS 6 supports the following configurations: Pod and Move Pro.

What's in the TRIOS 6 box?

Together with TRIOS 6, you will receive 1 autoclavable tip, a box of 25 Ready Tips*, a box of 100 TRIOS Sleeves, 3 batteries, pod, charger incl. cable, Wi-Fi dongle, instructions for use and safety guide. You can choose to buy TRIOS 6 in a pod configuration with laptop or together with Move Pro.

Tip related questions:

Are tips available in different sizes?

No, both the autoclavable and the TRIOS Ready Tip are available in one size.

How many autoclave cycles can the tip withstand?

The autoclavable tip can be autoclaved up to 100 times. The TRIOS Ready Tip is for one-time use only.

Are the scanner tips closed?

Yes, both the autoclavable tip and the TRIOS Ready Tips will be closed for optimized hygiene.

How should TRIOS Sleeves be used? Are they reusable?

TRIOS Sleeves provide an extra protective layer to prevent patient cross-contamination and should only be used once.

Does TRIOS 6 have a mandatory subscription?

No. Every new TRIOS scanner currently comes with a complimentary TRIOS Care the first year. TRIOS Care is a full coverage service plan that includes personalized onboarding programs, a 5-year warranty, express replacement, accidental drop coverage, 10TB cloud storage, and more.

After the first year, you can continue with TRIOS Care or switch to TRIOS Only; a basic, scan-ready service agreement. Learn more about TRIOS Care [here](#).

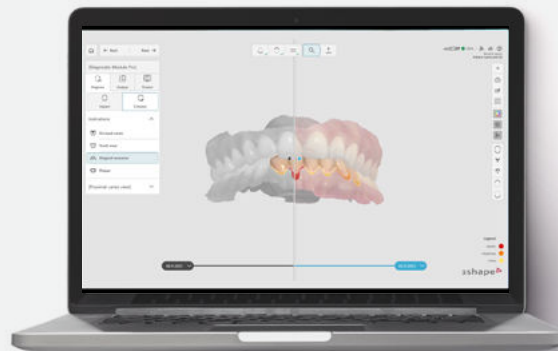
What is the price of TRIOS 6?

Please contact your local reseller or visit the online store at 3Shape.com for prices.

* Please note that the availability of TRIOS 6 and accessories is subject to regional availability

Introduction to 3Shape TRIOS Dx

(Please note that availability of TRIOS Dx is subject to regional availability. Moreover, TRIOS Dx is not yet cleared by the FDA for clinical use in the USA)



What is TRIOS Dx Plus?

AI-assisted aid for objective oral health condition detection. TRIOS Dx Plus is AI-assisted software designed to enhance your clinical practice by providing an invaluable second opinion and ensuring objective, consistent aid in detecting key Oral health conditions.

Severity Classification. Not only does TRIOS Dx Plus support you to detect oral health conditions, but it also enables you to read the suggested severity of their progression.

Monitoring over time. Follow your patient with scans over time and be able to manually compare and identify the changes over time and have the documentation done automatically and immediately available.

Improved patient communication. TRIOS Dx Plus builds trust between you and your patients, helping patients understand their oral health through clear and detailed visualizations.

What can I use TRIOS Dx Plus for?

With TRIOS Dx Plus your TRIOS scans can be used for more than just restorative work; they become powerful resources for both treatment and the early detection of oral health conditions, enhancing early care for your patients. TRIOS Dx comes in two levels: Plus and Standard. Each level is designed to cater to different needs and preferences, ensuring that you have the right tools for your practice.

TRIOS Dx Plus. This subscription-based upgrade expands the usage of your TRIOS 6 scans with AI-powered features. The AI-supported features of TRIOS Dx Plus assist in early detection and manual comparison of various oral health conditions, including:

- Surface caries and proximal caries^{1,2}
- Tooth wear
- Gingival recession
- Plaque

TRIOS Dx Standard. This is the standard product configuration, providing essential features such as Difference Maps, Cross Section tool, and Measurement tools, which you know from TRIOS Patient Monitoring.

How does TRIOS Dx Plus use AI?

Being trained on several thousand scans, TRIOS Dx Plus leverages AI algorithms and pattern recognition to identify and classify surface caries, tooth wear, gingival recession, and plaque. The AI detected lesions and sites are presented as colored areas directly on your TRIOS 6 scans within the TRIOS Dx module.

How accurate is the AI in TRIOS Dx Plus?

While our AI is highly trained, it may not be 100% accurate. False positives are expected in any diagnostic system, including TRIOS Dx Plus. The software provides an AI confidence score indicating an aggregated lesion score prediction providing transparency and insights into certainty of the AI. TRIOS Dx is designed to assist dental professionals, providing insights based on patterns but not replacing clinical judgement. TRIOS Dx should always be used as an aid alongside your professional expertise.

Which scans is TRIOS Dx Plus compatible with?

TRIOS Dx Plus features are compatible with TRIOS 6 scans while TRIOS Dx Standard features are compatible with all TRIOS scans.

Will TRIOS Dx replace TRIOS Patient Monitoring?

Trios Dx Standard will inherit the features you know from TRIOS Patient Monitoring and will eventually replace TRIOS Patient Monitoring. When TRIOS Dx becomes available in your market, there will be a grace period during which both TRIOS Dx and TRIOS Patient Monitoring will be available. During this time, users can enter previous Patient Monitoring cases but cannot create new ones, effectively putting TRIOS Patient Monitoring in a view-only mode. After the grace period, TRIOS Patient Monitoring will be discontinued.

¹ Only compatible with TRIOS 6 scans

² Proximal is caries is not AI detected

When will TRIOS Dx Plus be available in my market?

As TRIOS Dx is a medical device, it requires approval from local competent authorities. This varies from region to region and the availability is therefore following local regulatory approval.

What is the subscription price of TRIOS Dx Plus?

Please visit the online store at 3shape.com for prices.

Is cloud storage included in the TRIOS Dx Plus subscription?

TRIOS Dx Plus subscription does not include cloud storage. If you are on TRIOS Only service subscription, 10GB of cloud storage is included. If you are on TRIOS Care service subscription instead, 10TB are included.

How long does the free trial of TRIOS Dx Plus last?

TRIOS Dx Plus free trial lasts six months from activation.

What happens at the end of TRIOS Dx Plus free trial?

You don't have to do anything. You will automatically be enrolled in the TRIOS Dx Plus subscription and renewals will occur automatically until you unsubscribe.

How can I find TRIOS Dx in Unite?

Once you have downloaded the TRIOS Dx module, it can be entered from Unite in one of the two following ways:

1. Press the TRIOS Dx Scan icon in the action overview in Unite.
2. Press the TRIOS Dx Scan icon in a follow-up action to a TRIOS Status Scan.

Can I use my old scans with TRIOS Dx Plus?

For the time being only the scans from TRIOS 6 are approved and available for the TRIOS Dx Plus module.

Can scans from non-TRIOS scanners be used with TRIOS Dx and TRIOS Dx Plus?

TRIOS Dx is only compatible with TRIOS scans.

Can TRIOS Dx Plus be used simultaneously by more operators?

The TRIOS Dx Plus license is designed to support multiple users in a clinic setting. Each license includes three seats, meaning three clinic members can use the software at the same time. If your clinic needs more seats, you can add additional seats to your license.

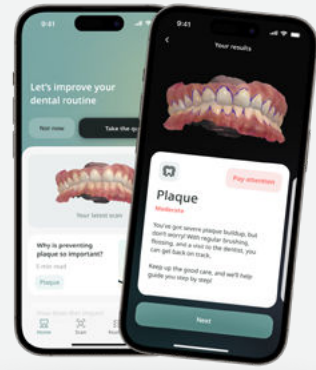
Where can I find support material for TRIOS Dx Plus?

You can always find help at [3Shape Help Center](#) or [3Shape Community](#) — your digital dentistry platform.

How can I be onboarded and trained to use TRIOS Dx Standard and TRIOS Dx Plus?

Your TRIOS Dx software has in-software tutorials that will guide you through all the basic buttons and features of the software. For more training materials, tips and tricks you can go to [3Shape Community](#) — your digital dentistry platform and [3Shape Help Center](#).

Introduction to 3Shape TRIOS Dx and DentalHealth App



What is the DentalHealth app?

DentalHealth is a free app that supports your patients to get more involved and invested in their dental health. The app contains your patients' personal scans and draws on TRIOS Dx to bring tailored, on-demand education and guidance for better dental hygiene.

What are the benefits of the app for the patient?

The app empowers your patients to engage in preventive care. The app can improve their dental literacy and help build healthy routines for plaque, surface caries, gum recession and tooth wear.

What are the benefits of the app for the dentist?

The app enables you to elevate patient education and differentiate your patient experience offering. Get your patients more invested with easier discussions, more preventative focus and strengthen patient loyalty and trust.

Does it cost anything?

No. The app is 100% free.

How does the app work with TRIOS?

The app is based on TRIOS scans and the new TRIOS Dx Plus diagnostic-assistive technology. Patients can compare and inspect their scans with or without diagnostic visualizations. The app offers personalized tips and tricks from official dental sources to assist building new healthy routines.

What can I share to the app?

You can share TRIOS scans and diagnostic visualizations to the app. To unlock the full potential of the app we recommend to always share diagnostic visualizations.

How do I share scans to the app?

You can share scans through Unite in the Patient Media Library and through the Diagnostics module. You can decide which diagnostic results are visible to the patient.

Can anyone use the app?

Yes, the app is very user-friendly. There is step-by-step onboarding and guidance in the app.

Where is the app available?

The app is available in Europe and US. It works on both IOS and Android.